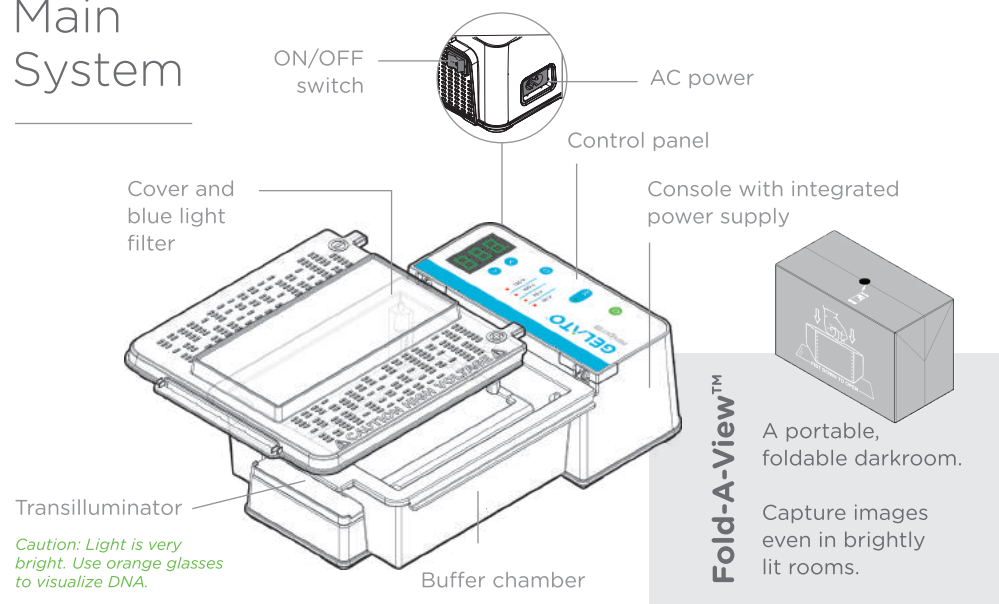
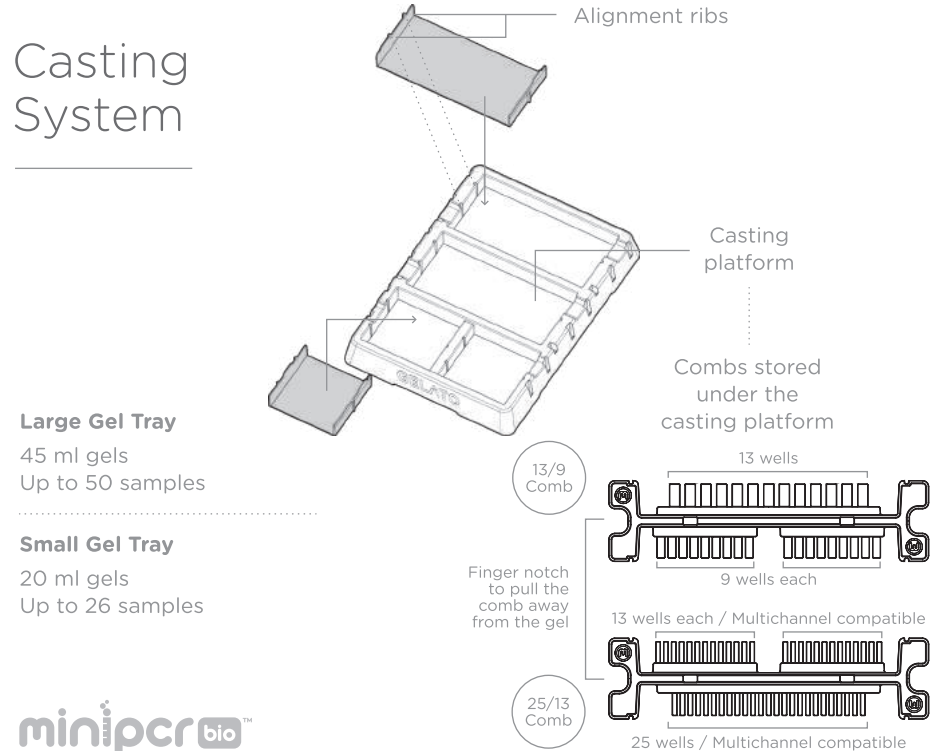


CONTENTS

Main System



Casting System

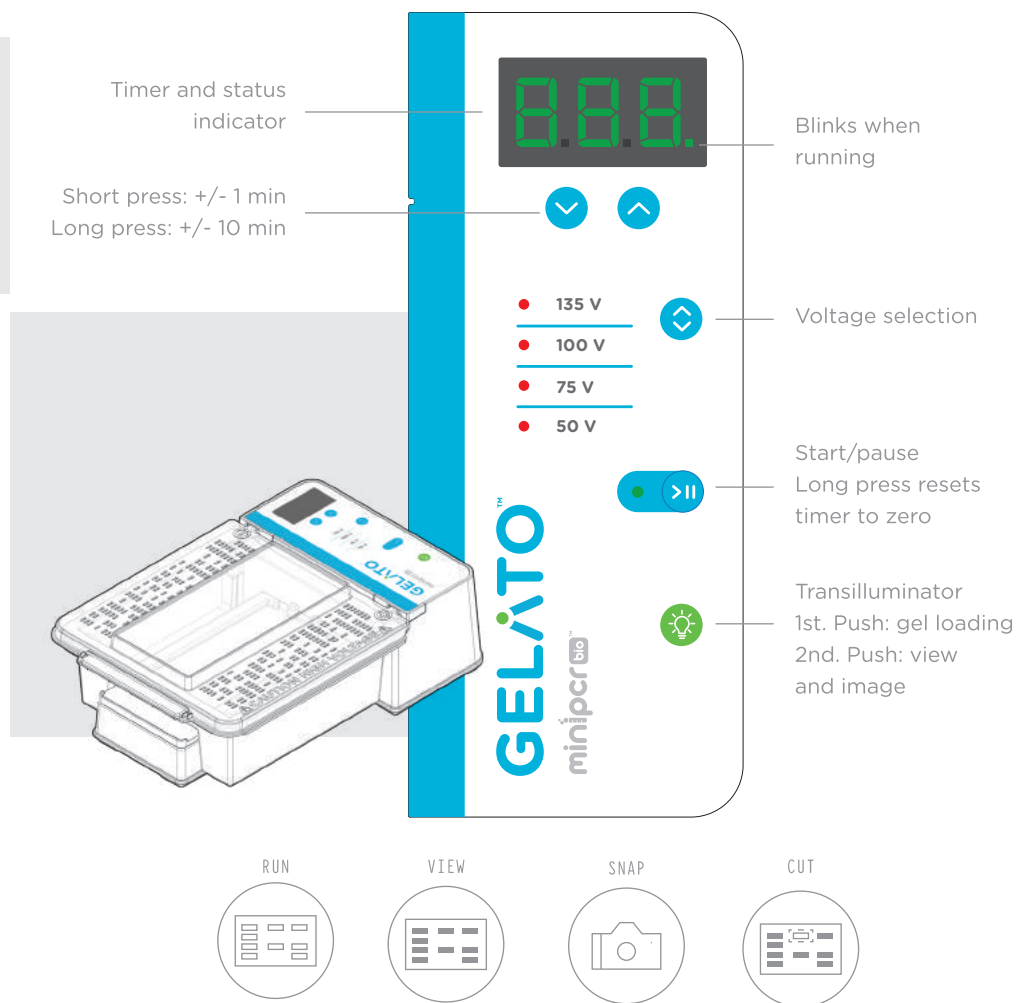


GELATO™

QUICK START
GUIDE

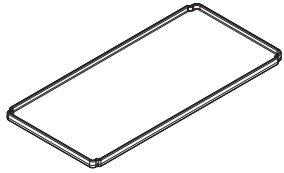
ELECTROPHORESIS + TRANSILLUMINATION

For scientists with great taste™



minipcr^{bio}

TRANSILLUMINATOR-ONLY INSTRUCTIONS



GEL CUTTING TRAY

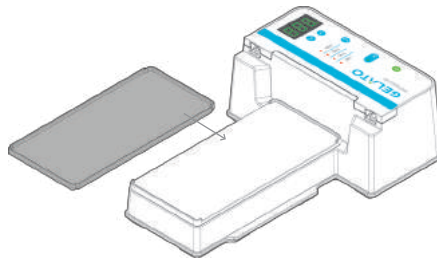
+



ORANGE GLASSES

STEP 1

Place cutting tray on the transilluminator.



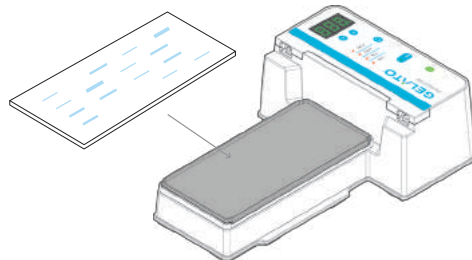
STEP 2

Put on orange glasses.



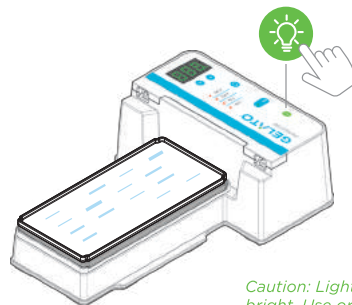
STEP 3

Place agarose gel on the cutting tray.



STEP 4

Press the light button twice for 100% illumination. View and cut your bands.

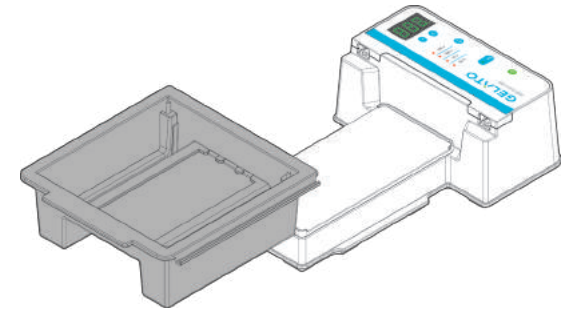


Caution: Light is very bright. Use orange glasses to visualize DNA.

OPERATING INSTRUCTIONS

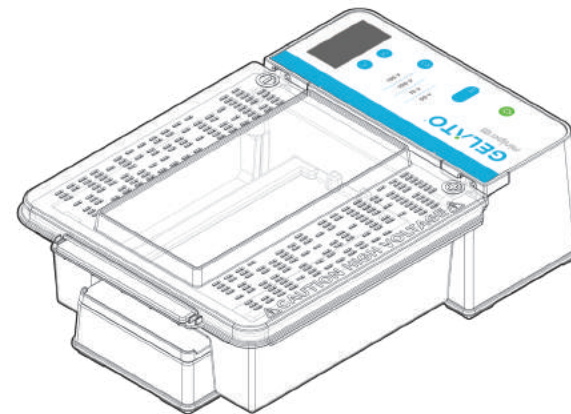
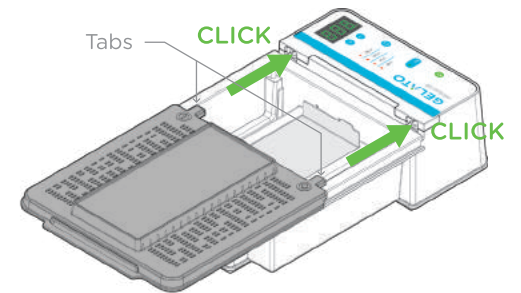
STEP 1

Place buffer chamber on the Gelato console.



STEP 2

Place cover on the buffer chamber and slide so the tabs on the cover click into their place.



SLIDE OPEN THE COVER TO REMOVE THE BUFFER CHAMBER