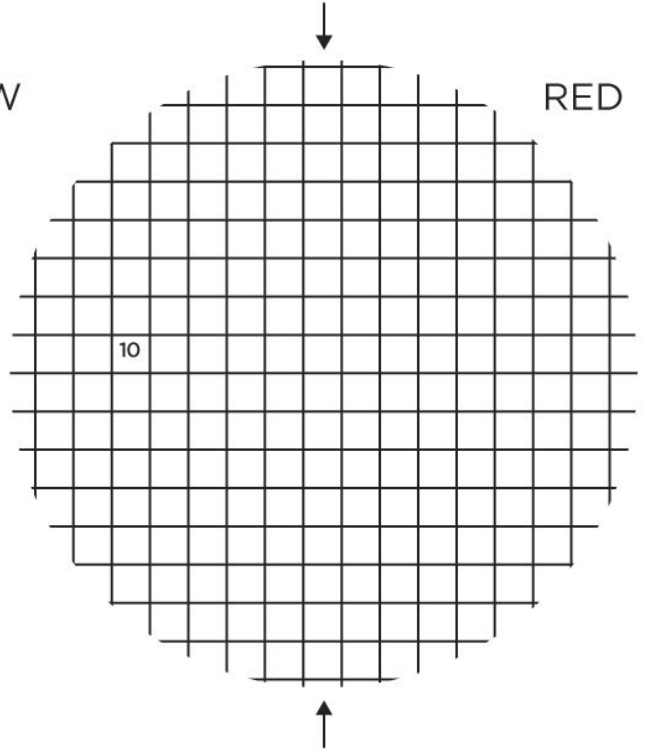
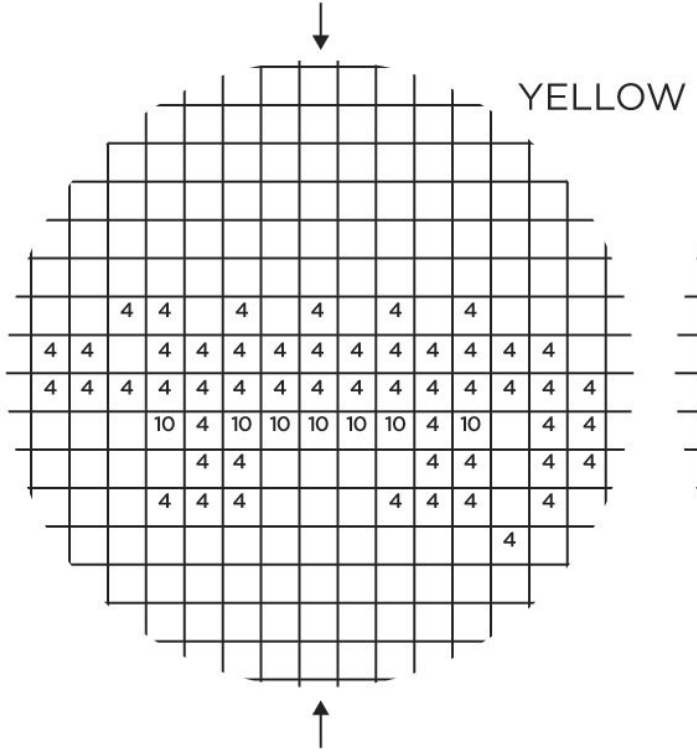
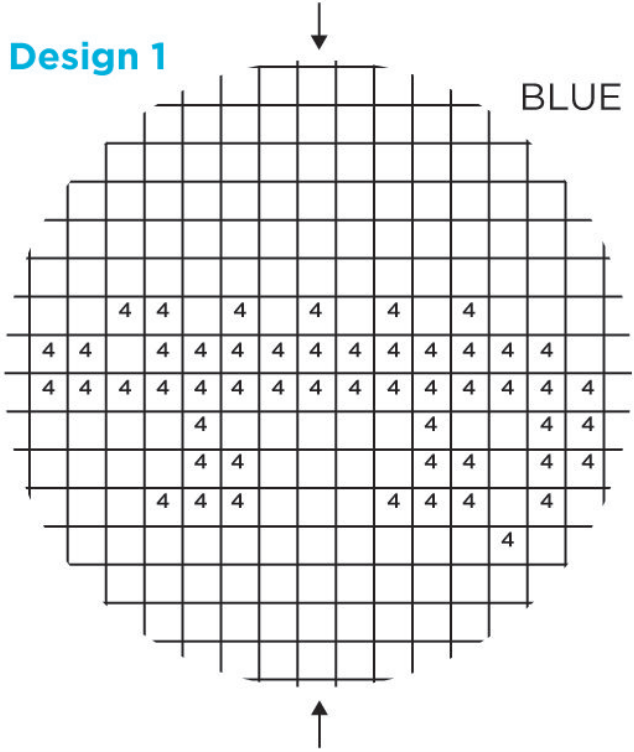
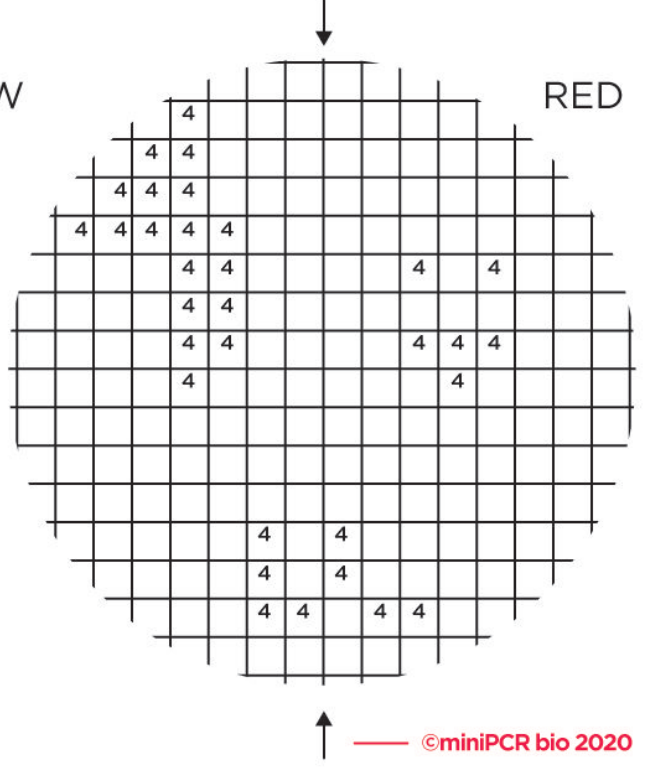
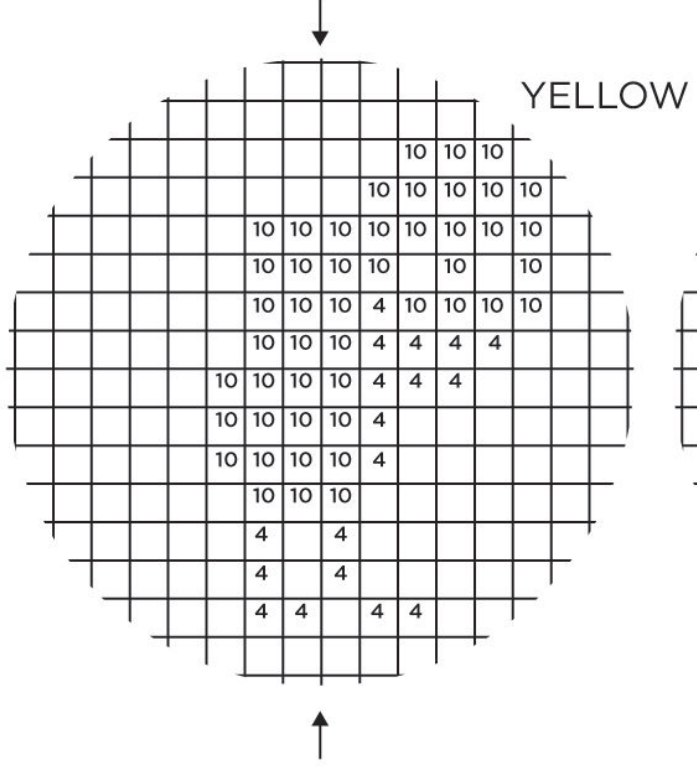
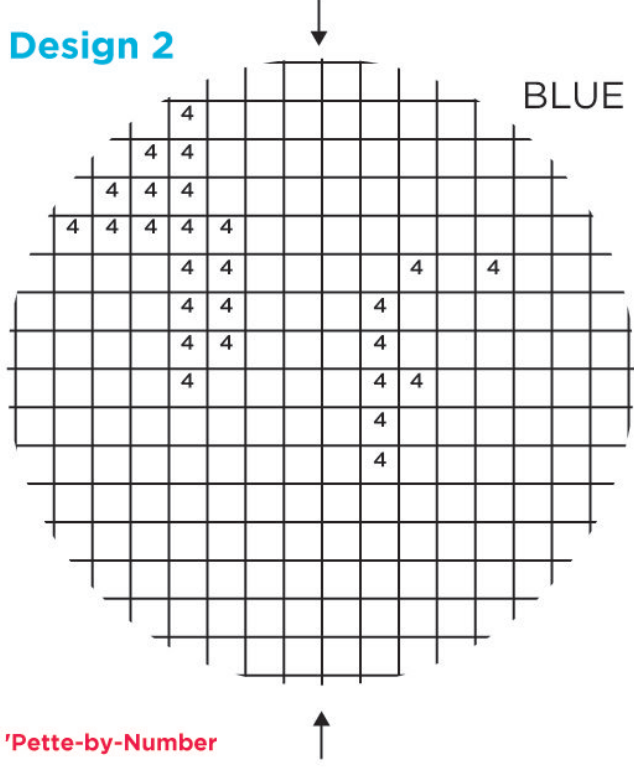


Design 1



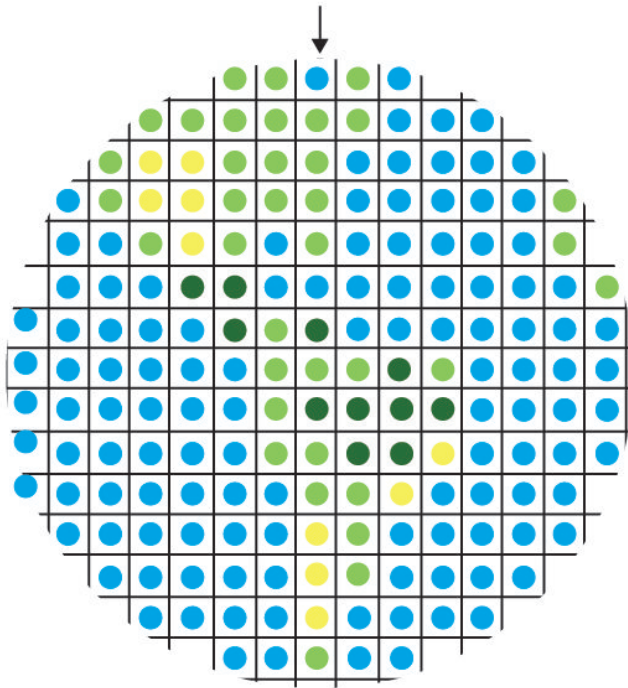
Design 2



Planet Earth

Palette:

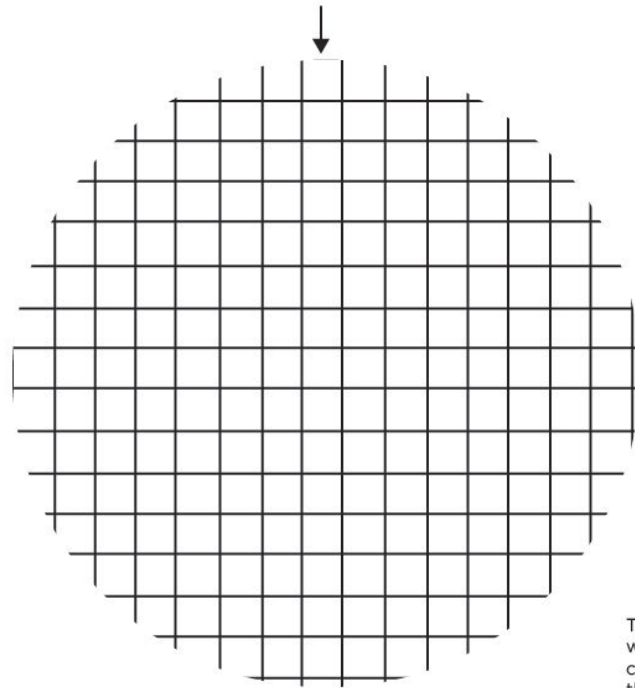
- Lime Green
10 μL yellow +
4 μL blue
- Deep Green
4 μL yellow +
10 μL blue
- True Yellow
14 μL yellow
- True Blue
14 μL blue



Copy these colors



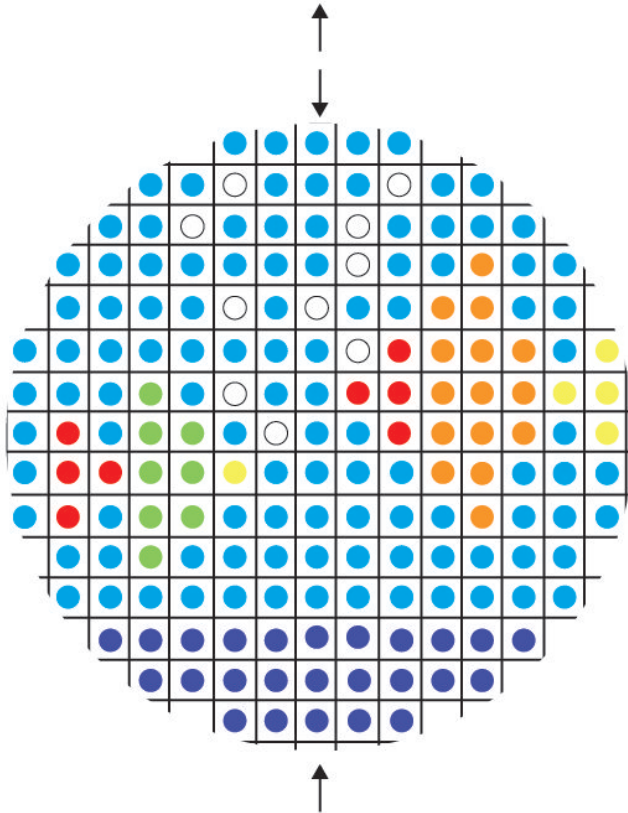
Check your work against a neutral background



Fishbowl

Palette:

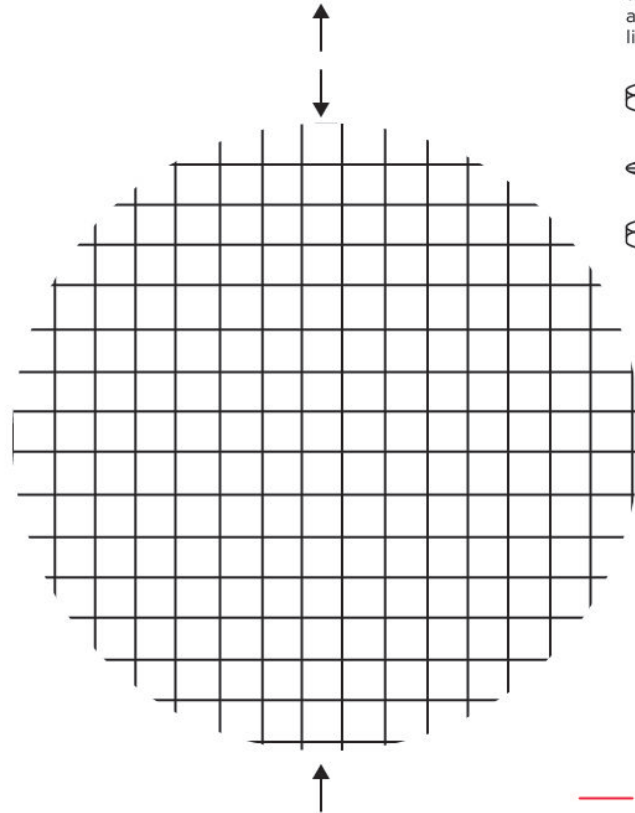
- Water (14 μL)
- True Blue
14 μL blue
- Ocean Blue
4 μL red +
10 μL blue
- Lime Green
10 μL yellow +
4 μL blue
- True Yellow
14 μL yellow
- Tangerine
10 μL yellow +
4 μL red
- Ruby
14 μL red



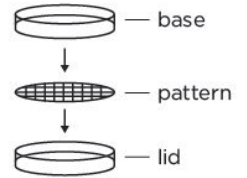
Copy these colors

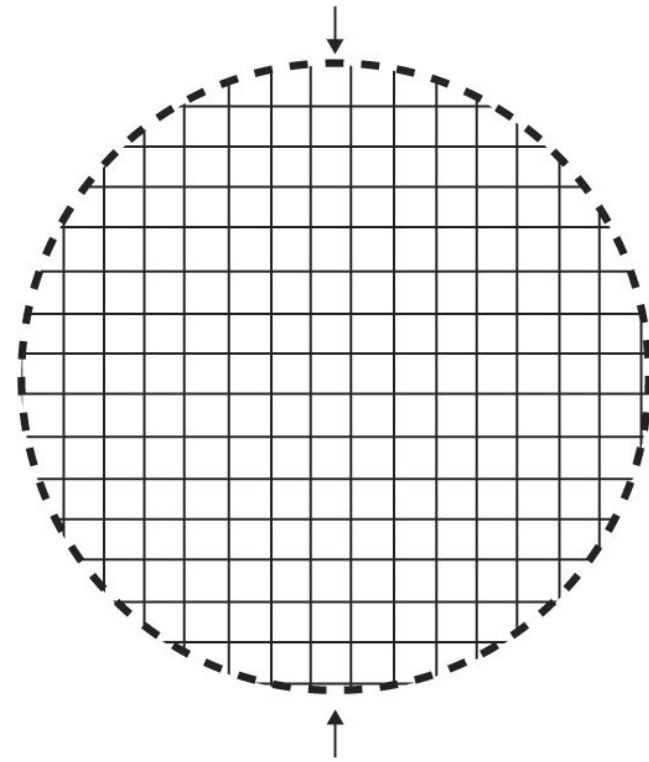
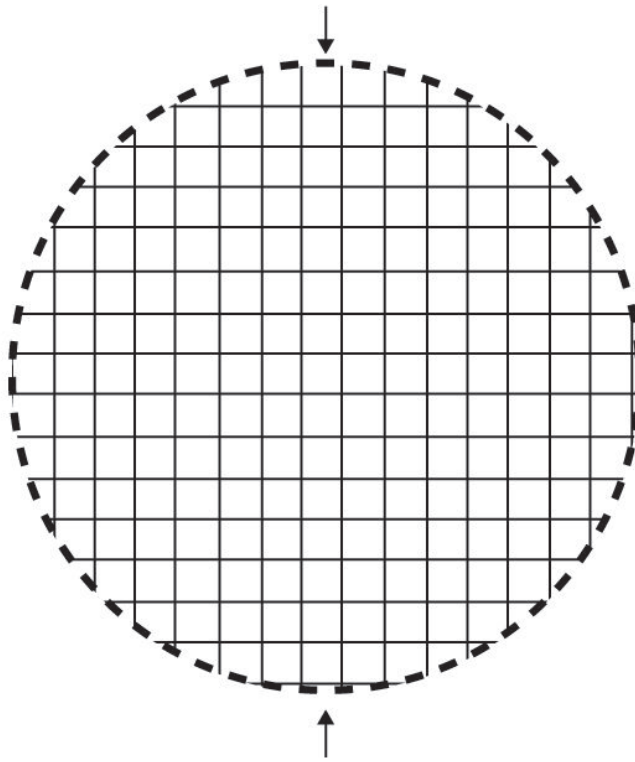
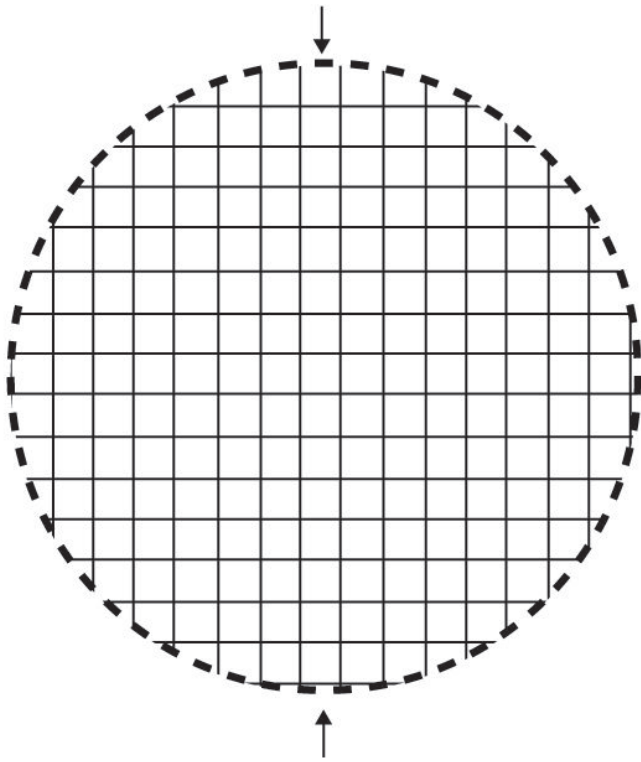


Check your work against a neutral background



Tip: To stabilize pattern while micropipetting, consider cutting out the colored patterns and nesting them in the lid of the Petri dish.





Suggested recipes:

For 20 μ L total volume

- | | | |
|---|--|---|
| ● Amethyst
10 μ L red +
10 μ L blue | ● Amber
10 μ L red +
10 μ L yellow | ● Emerald
10 μ L yellow +
10 μ L blue |
| ● Magenta
16 μ L red +
4 μ L blue | ● Gold
16 μ L yellow +
4 μ L red | ● Turquoise
16 μ L blue +
4 μ L yellow |
| ● Ruby
20 μ L red | ● True Yellow
20 μ L yellow | ● Crystal Blue
20 μ L blue |
| ● Red-Orange
16 μ L red +
4 μ L yellow | ● Yellow-Green
16 μ L yellow +
4 μ L blue | ● Sapphire
16 μ L blue +
4 μ L red |

Make a design you love?
Share it with us on Instagram @miniPCR!

Need more blank templates?
Download printable grids at
www.minipcr.com/micropipetting