

'Pette-by-number

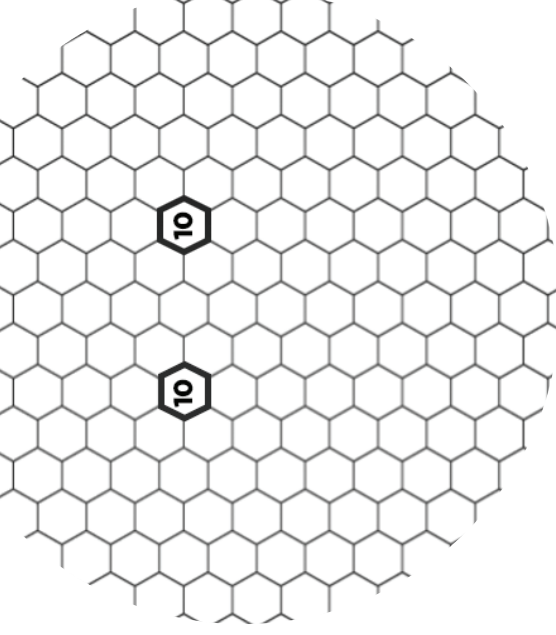
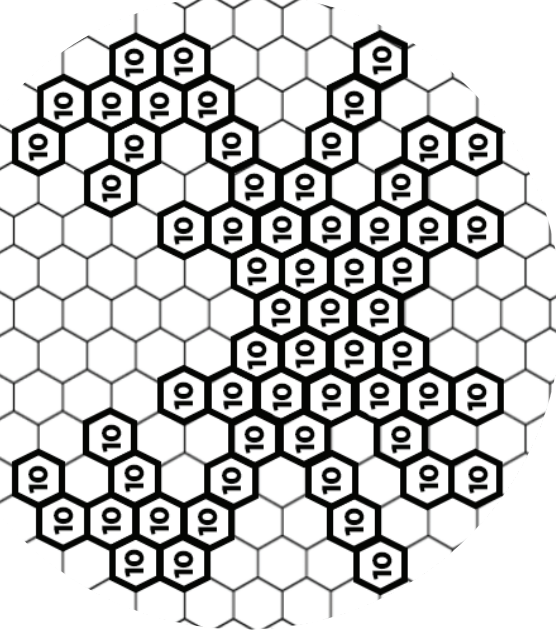
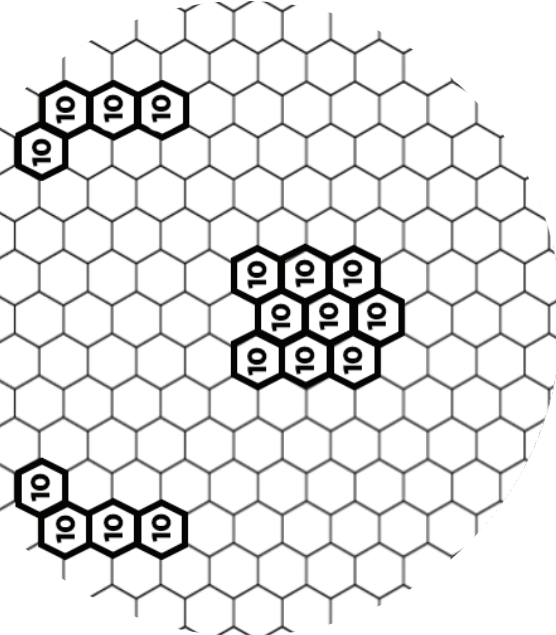
10 = 10 µl

minipcr bio

YELLOW

RED

BLUE

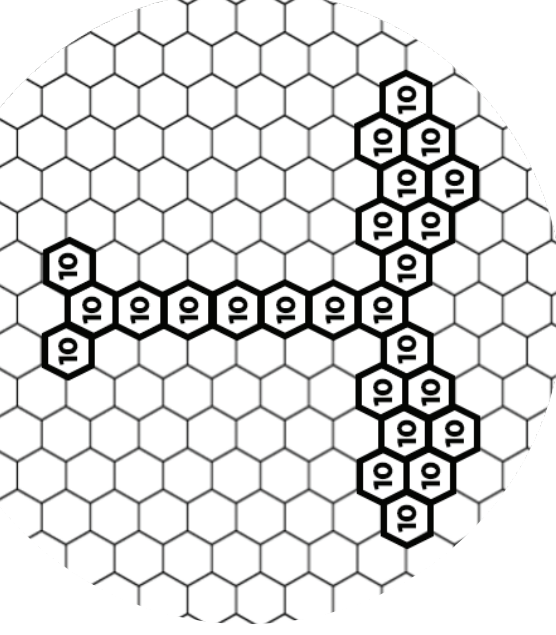
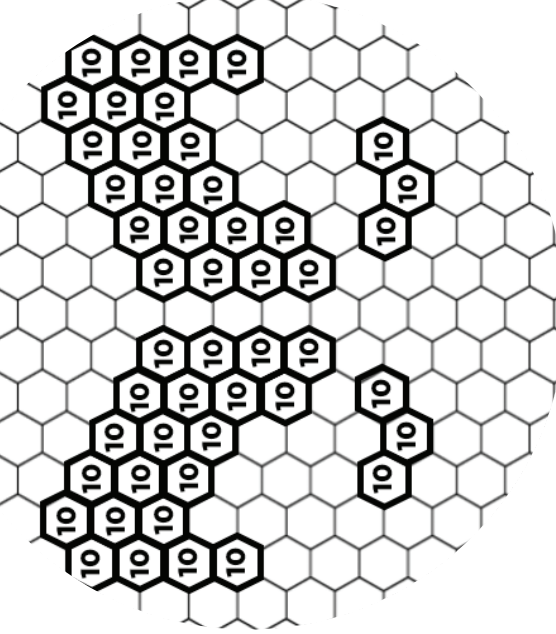
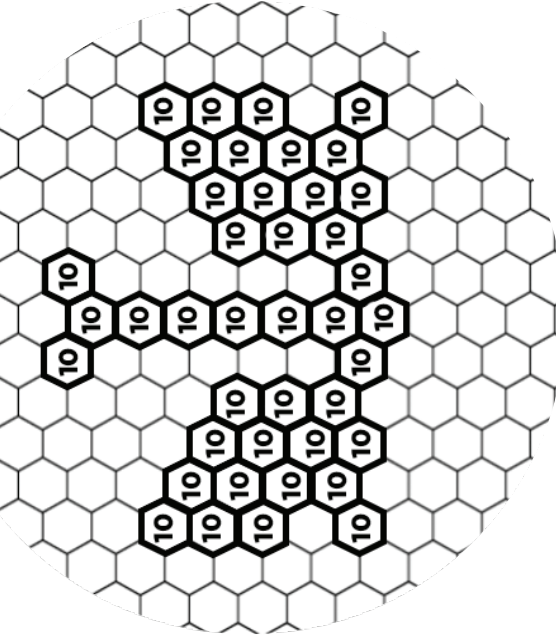


Design 1

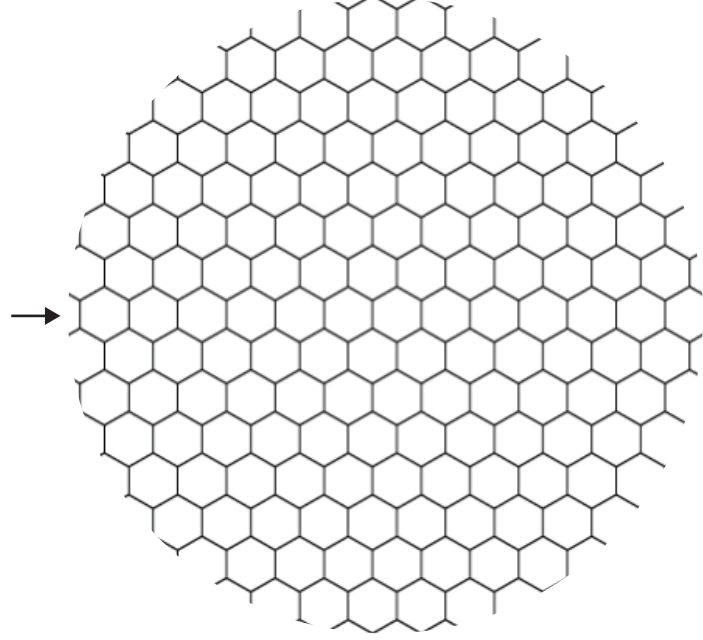
YELLOW

RED

BLUE

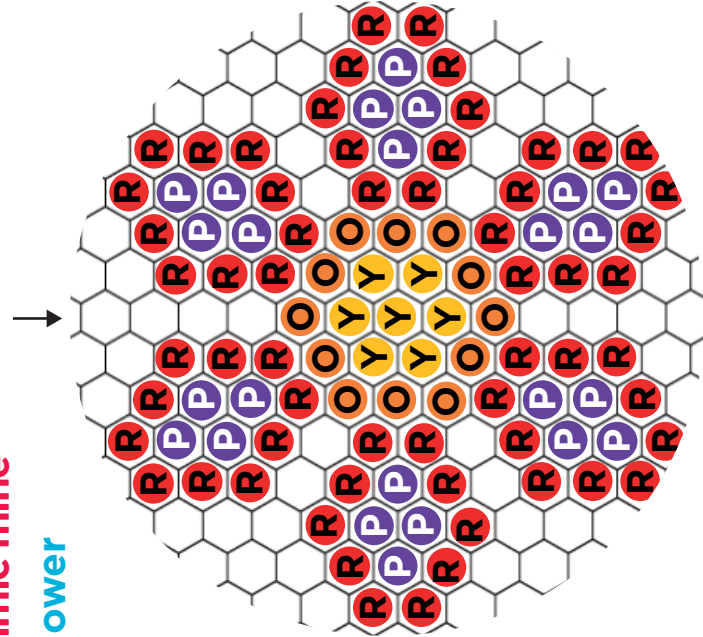


Design 2



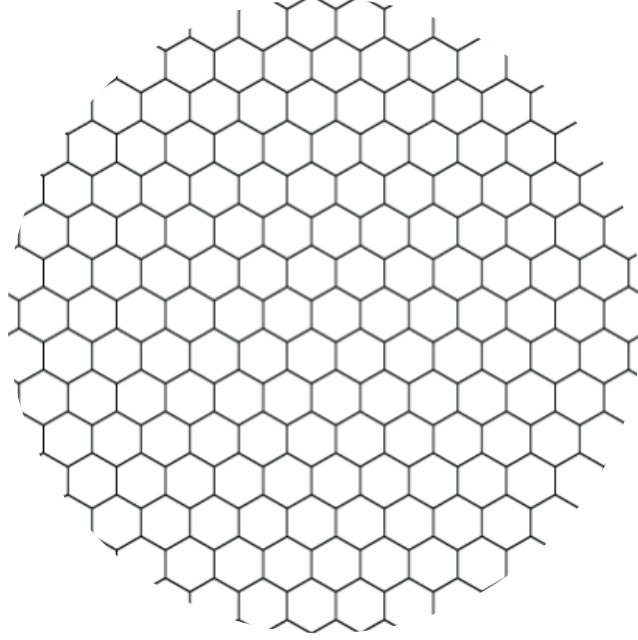
Copy this design

Check your work against a neutral background



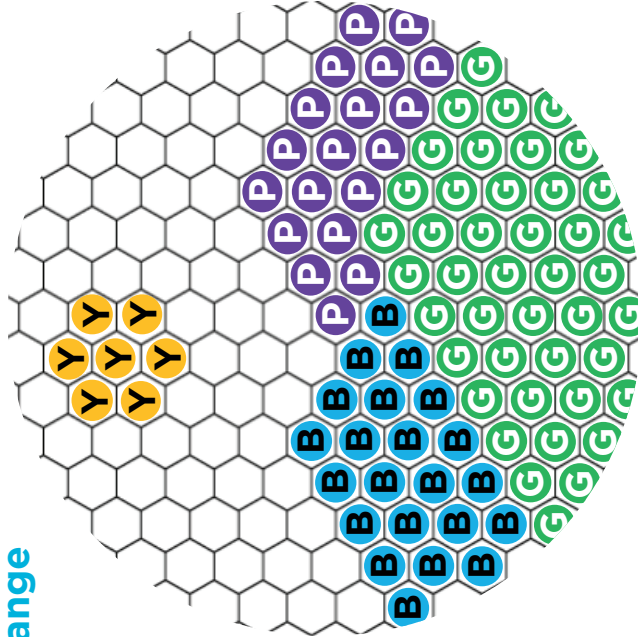
PALETTE

- R** Red 10 µl red
- O** Orange 10 µl red 10 µl yellow
- Y** Yellow 10 µl yellow
- G** Green 10 µl yellow 10 µl blue
- B** Blue 10 µl blue
- P** Purple 10 µl blue 10 µl red

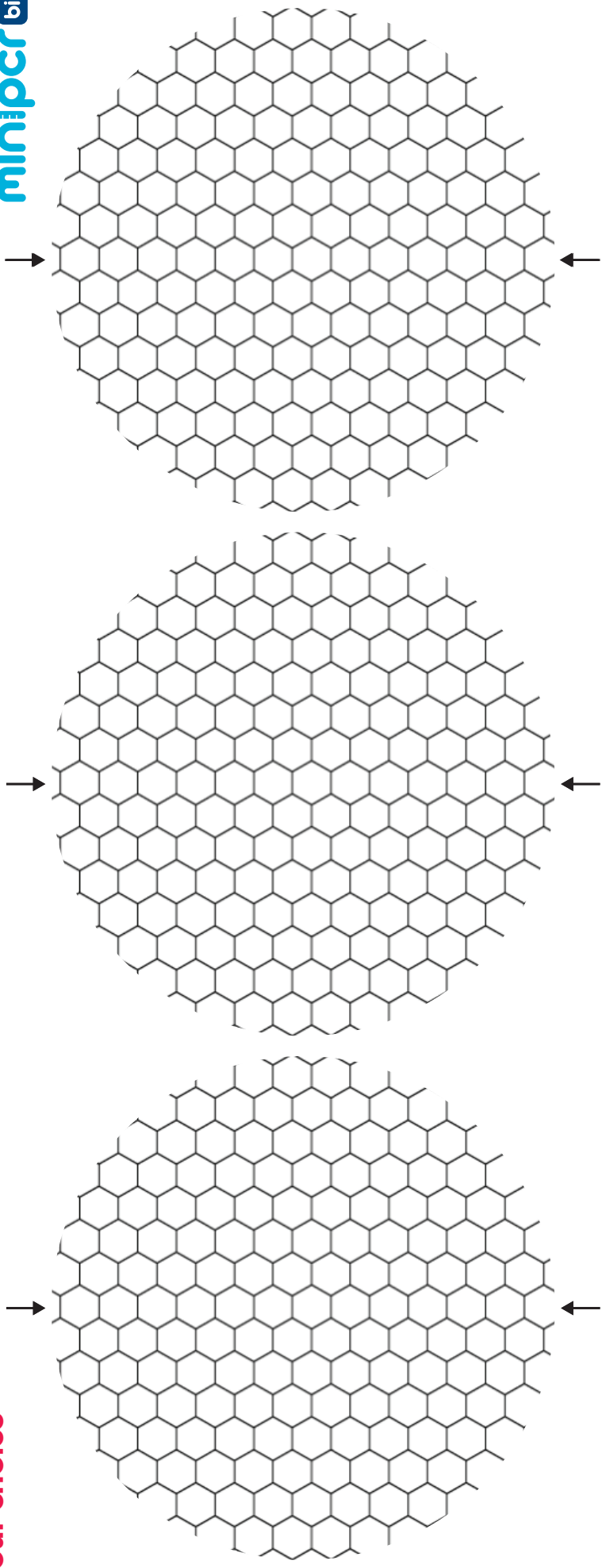


Copy this design

Check your work against a neutral background



Your choice



SUGGESTED RECIPES

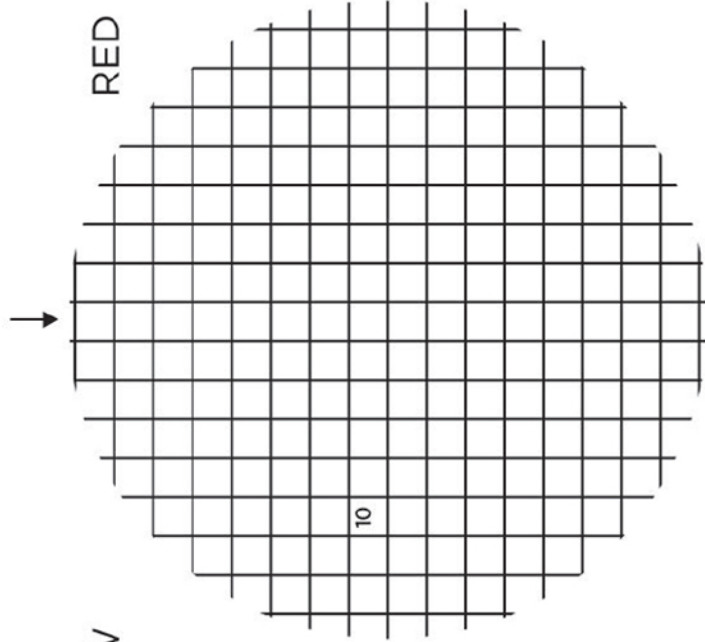
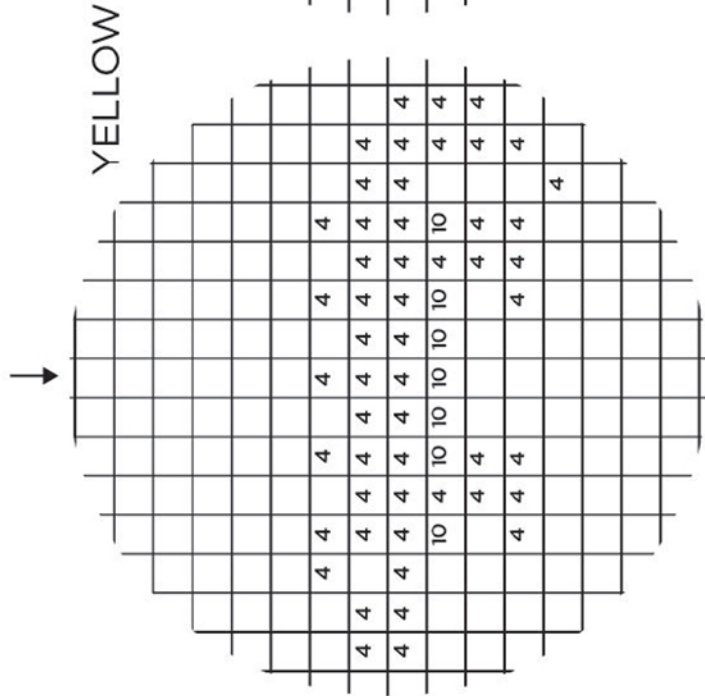
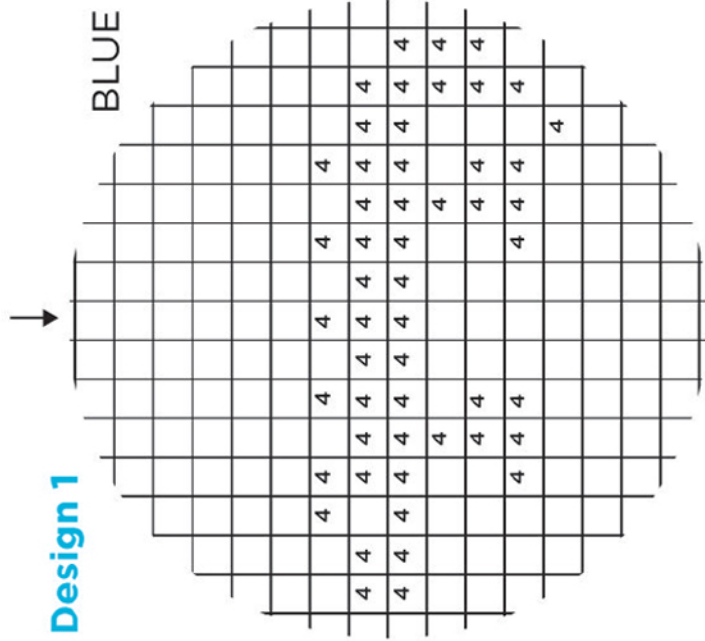
- R** Red 10 µl red
- G** Green 10 µl yellow
10 µl blue
- O** Orange 10 µl red
10 µl yellow
- B** Blue 10 µl blue
- Y** Yellow 10 µl yellow
- P** Purple 10 µl blue
10 µl red

Make a design you love?
Share it with us on Instagram @minipCR!

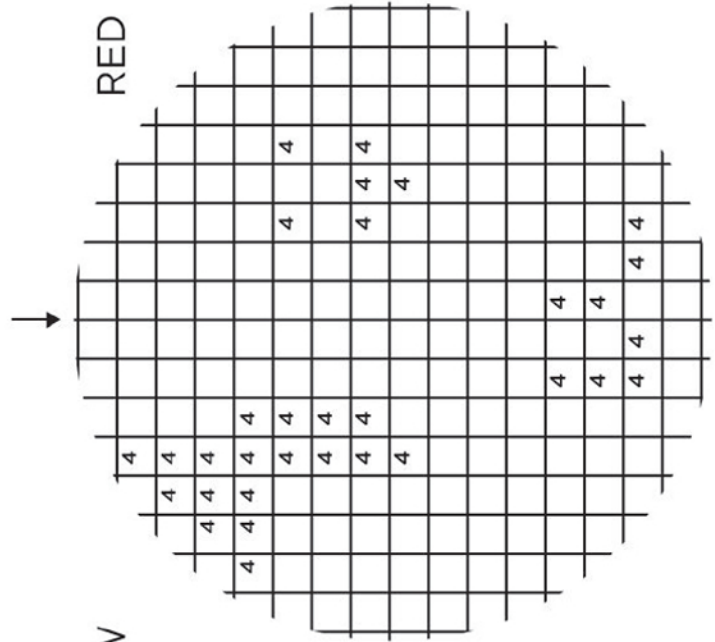
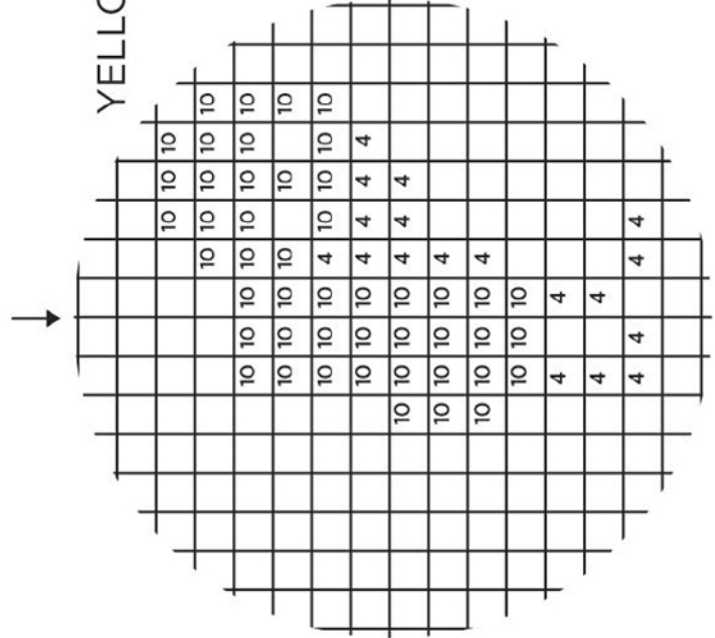
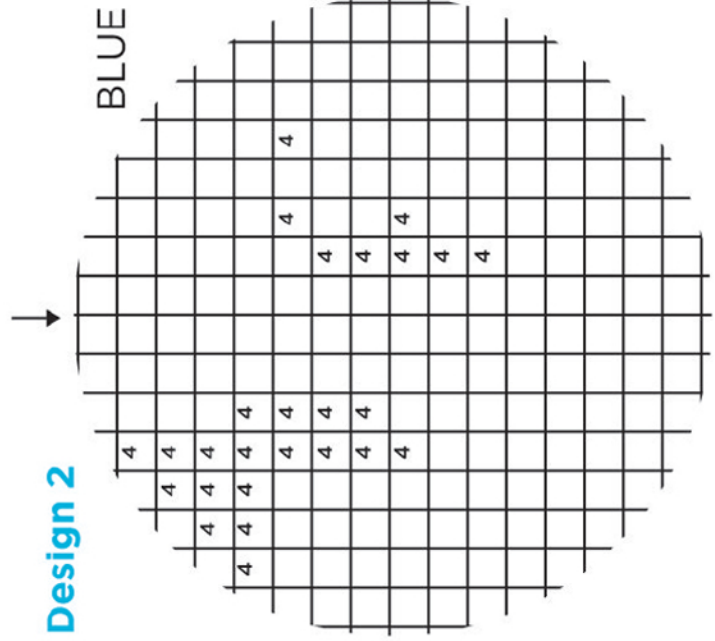
Need more blank patterns?
Download printable grids at
www.minipcr.com/micropipetting



Design 1



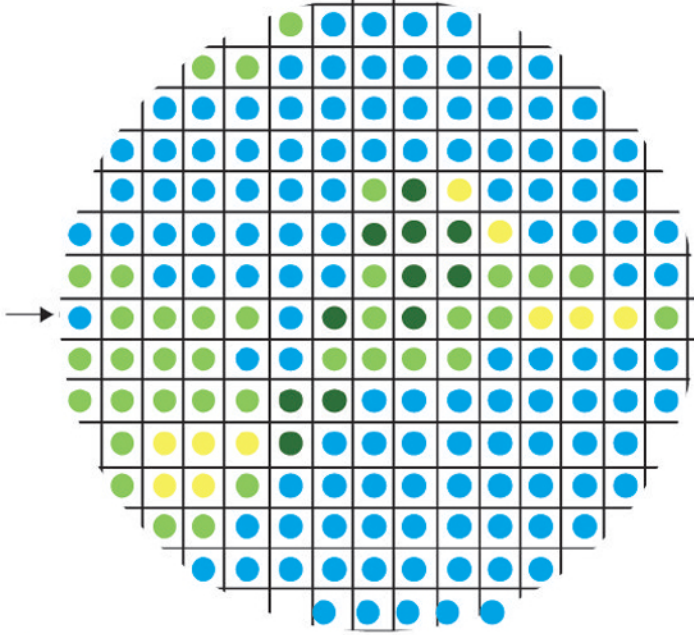
Design 2



Planet Earth

Palette:

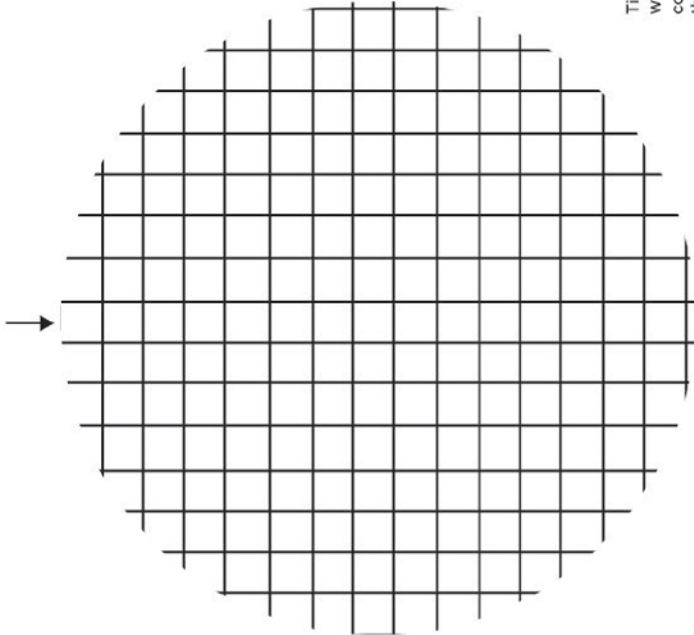
- Lime Green
10 μL yellow +
4 μL blue
- Deep Green
4 μL yellow +
10 μL blue
- True Yellow
14 μL yellow
- True Blue
14 μL blue



Copy these colors



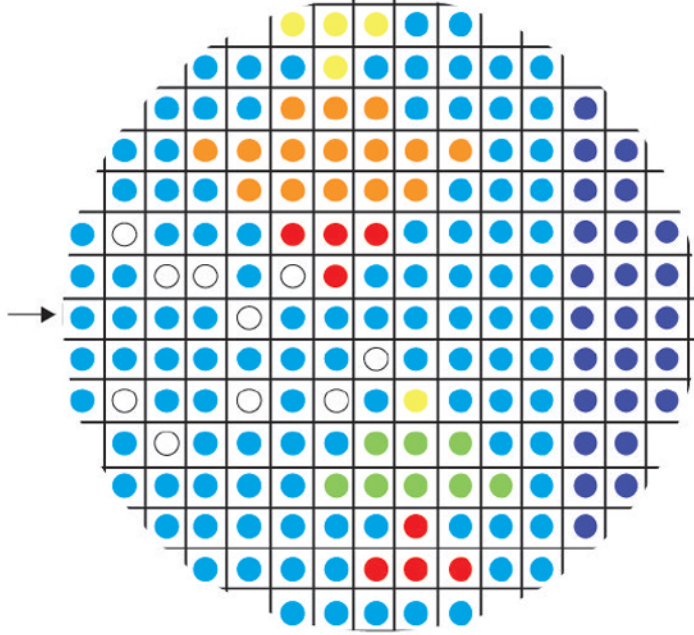
Check your work against a neutral background



Fishbowl

Palette:

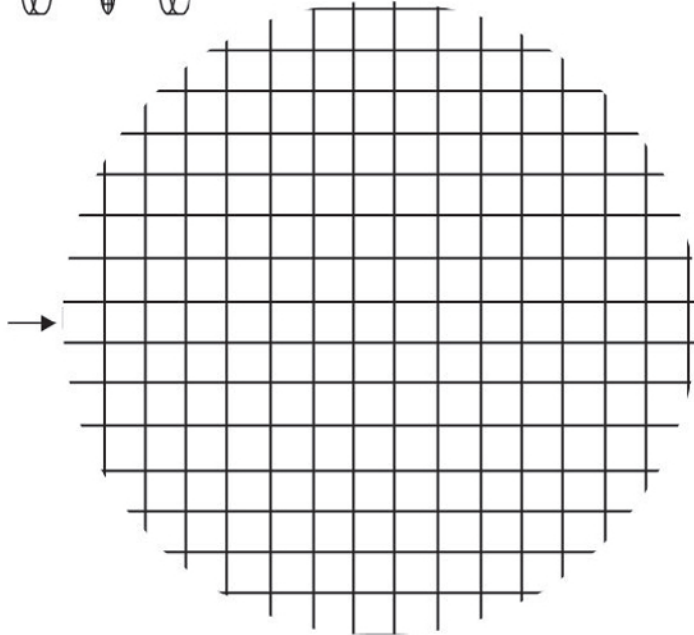
- Water (14 μL)
- True Blue
14 μL blue
- Ocean Blue
4 μL red +
10 μL blue
- Lime Green
10 μL yellow +
4 μL blue
- True Yellow
14 μL yellow
- Tangerine
10 μL yellow +
4 μL red
- Ruby
14 μL red



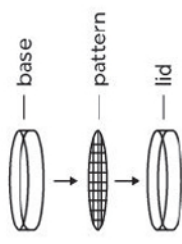
Copy these colors

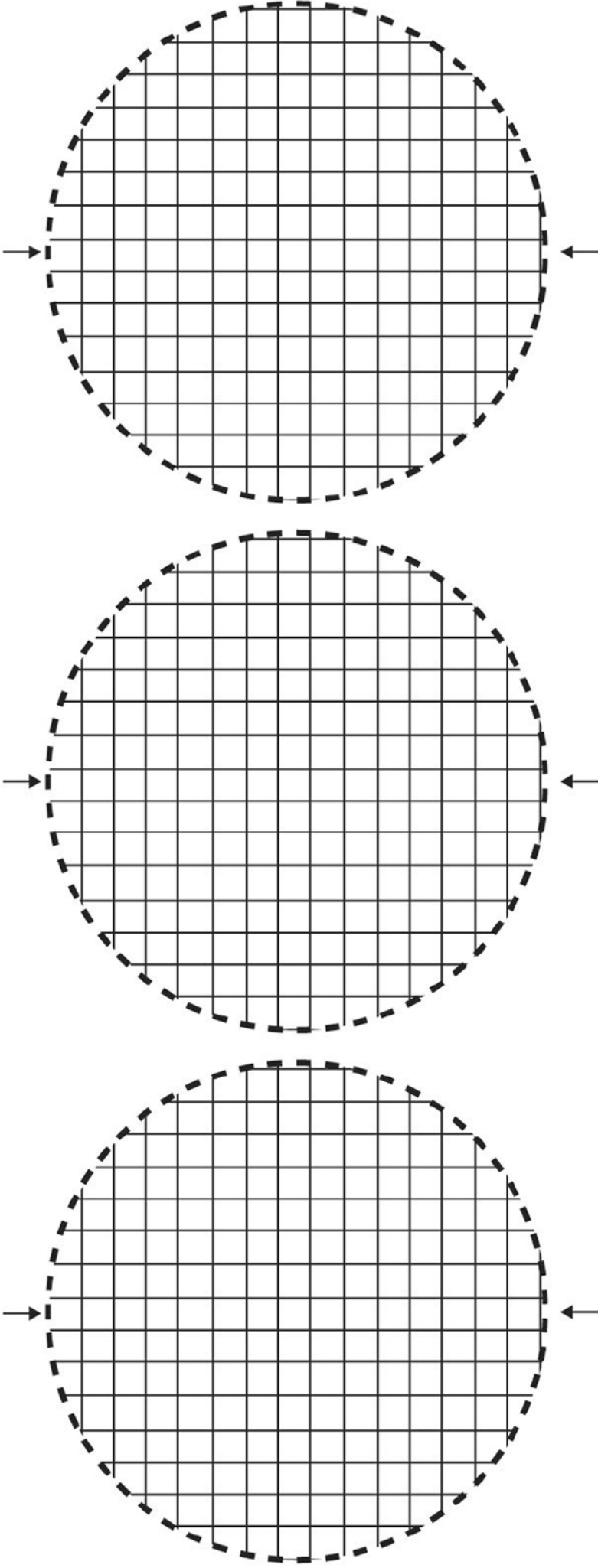


Check your work against a neutral background



Tip: To stabilize pattern while micropipetting, consider cutting out the colored patterns and nesting them in the lid of the Petri dish.





Suggested recipes:

For 20 μL total volume

● **Amethyst**

10 μL red +
10 μL blue

●

Magenta

16 μL red +
4 μL blue

●

Ruby

20 μL red

●

Red-Orange

16 μL red +
4 μL yellow

●

Amber

10 μL red +
10 μL yellow

●

Gold

16 μL yellow +
4 μL red

●

True Yellow

20 μL yellow

●

Emerald

10 μL yellow +
10 μL blue

●

Turquoise

16 μL blue +
4 μL yellow

●

Crystal Blue

20 μL blue

●

Sapphire

16 μL blue +
4 μL red

Make a design you love?
Share it with us on Instagram @miniPCR!

Need more blank templates?
Download printable grids at

www.minipcr.com/micropipetting